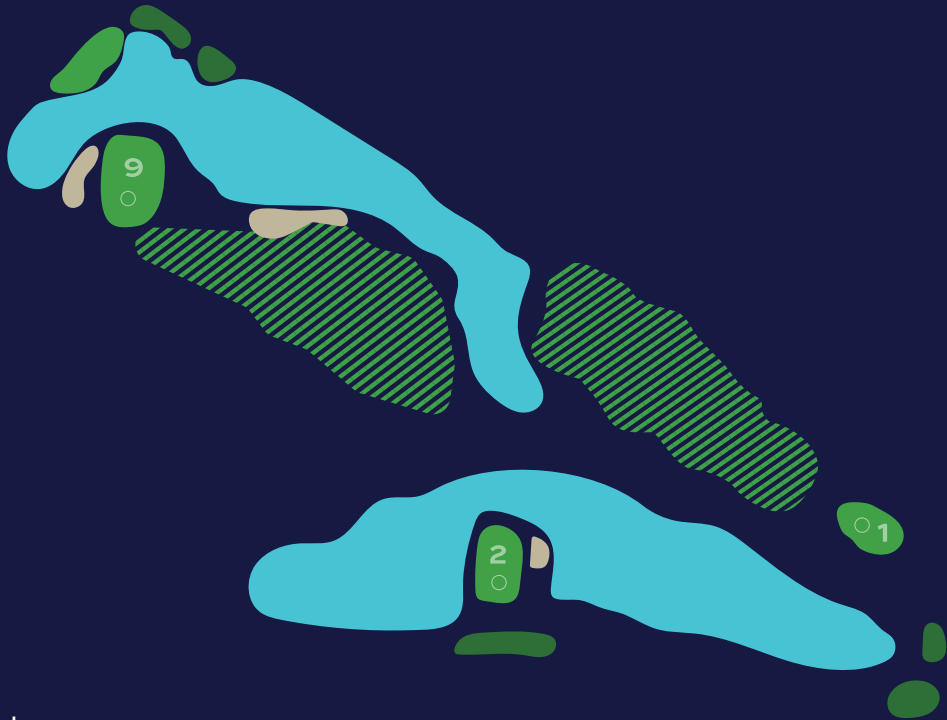




The ideal tee shot favors the left side to avoid the water on the right. The second shot is typically a short iron to a small contoured green.

◆	331	◆	264
◆	305	◆	252



With a bunker guarding the front of the green and water to the right, club selection is critical to hitting the green.

◆ 164

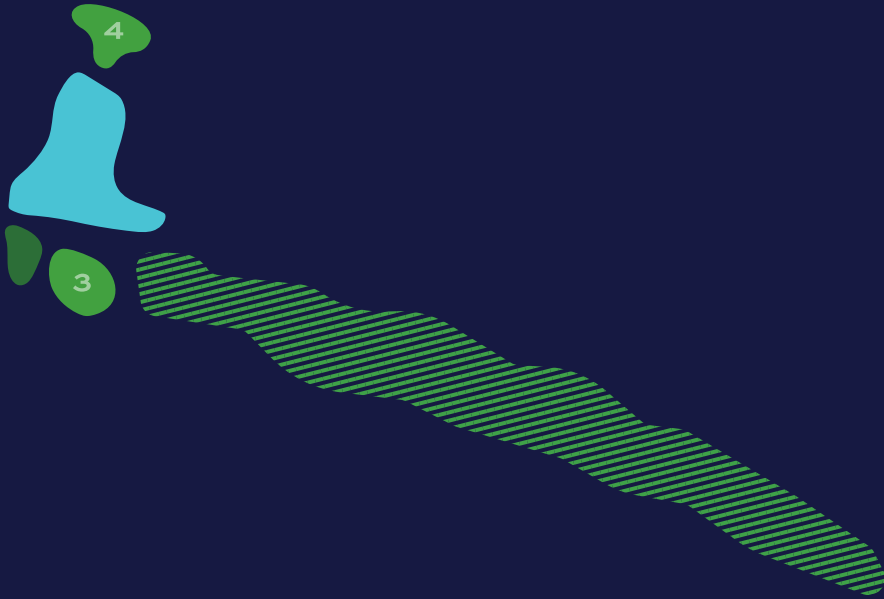
◆ 85

◆ 143

◆ 74

PAR 5

HOLE 3



This hole is the only par 5 and it requires an accurate tee shot to set up a birdie attempt. Following a good tee shot you will have a decision to make and if you go for the green it will require an accurate shot to avoid the water on the right and the hazard on the left.

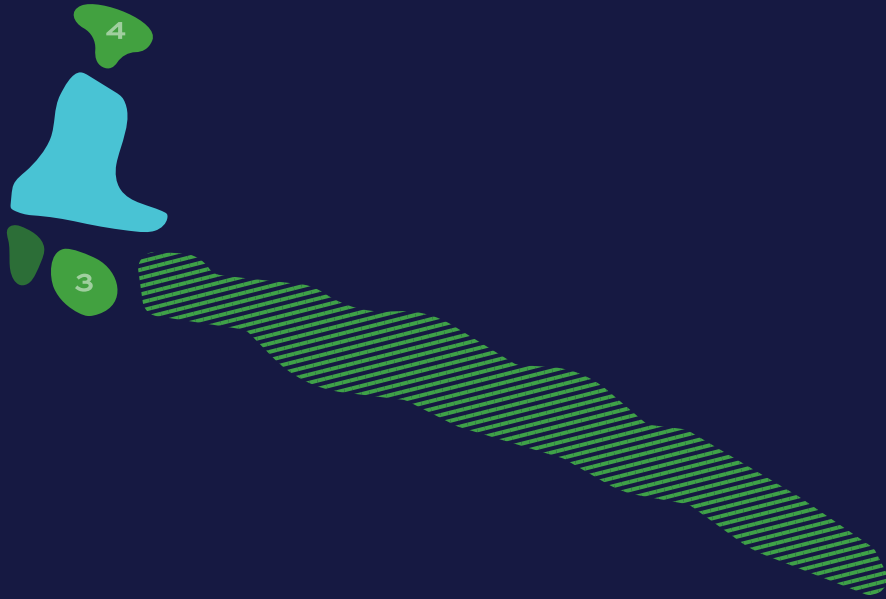
◆ 506

◆ 432

◆ 471

◆ 348

PAR **3**



HOLE **4**

Don't let the yardage fool you, club selection is important on this short but challenging par 3 that is a forced carry over water.

◆ 98

◆ 77

◆ 88

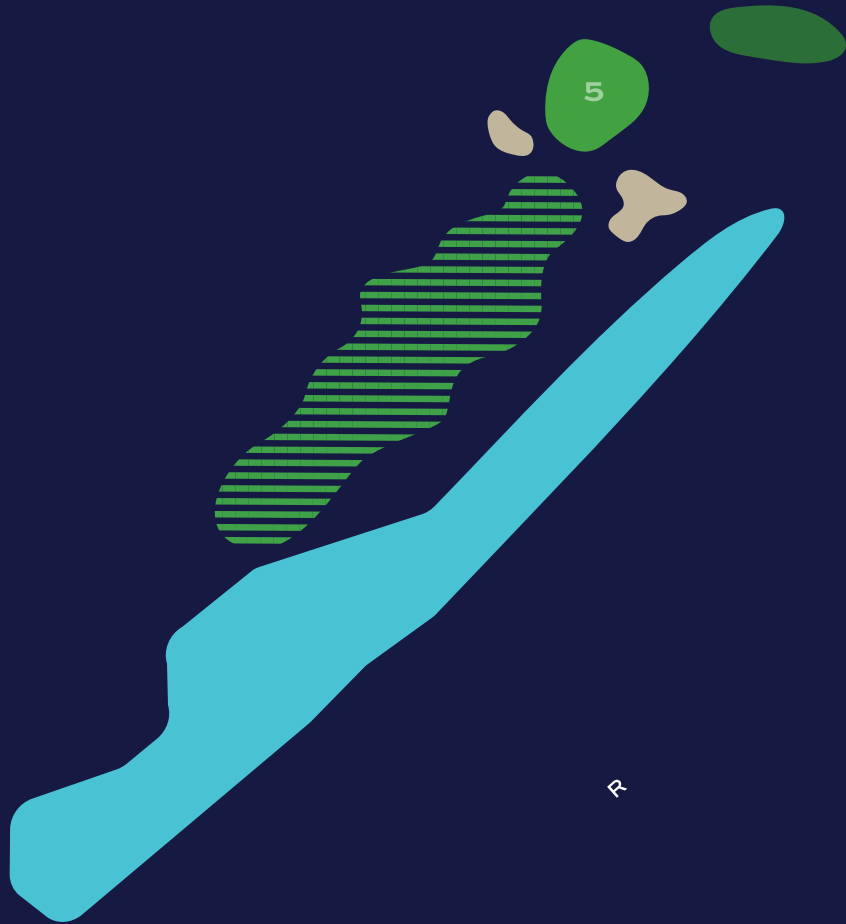
◆ 40

PAR **4**

HOLE **5**

You might want to leave driver in the bag to avoid the 2 large fairway bunkers. A good tee shot will leave you with a short iron to a challenging green.

- ◆ 252
- ◆ 243
- ◆ 248
- ◆ 208



PAR 4

HOLE 6

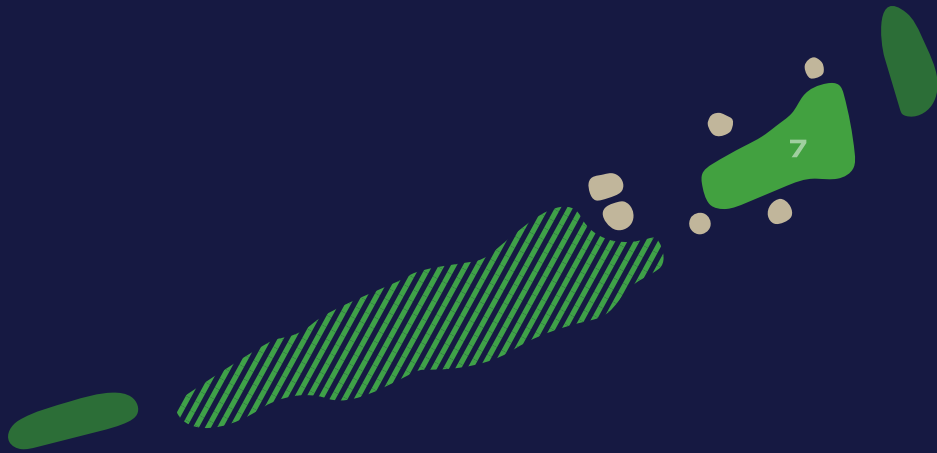
An ideal tee shot will favor the right side of the fairway. An accurate second shot is required to avoid the bunkers that guard the entire green.



◆	272	◆	23
◆	264	◆	212

PAR 4

HOLE 7



Keep your drive to the right side of the fairway to avoid the fairway bunkers on the left. Club selection will be critical to hit the right section of the largest green on the course.

◆ 271

◆ 237

◆ 261

◆ 222

PAR **4**

HOLE **8**



With a slight dogleg left, a proper tee shot will favor the right side of the fairway to set up a mid to short iron onto a green that is well guarded by bunkers.

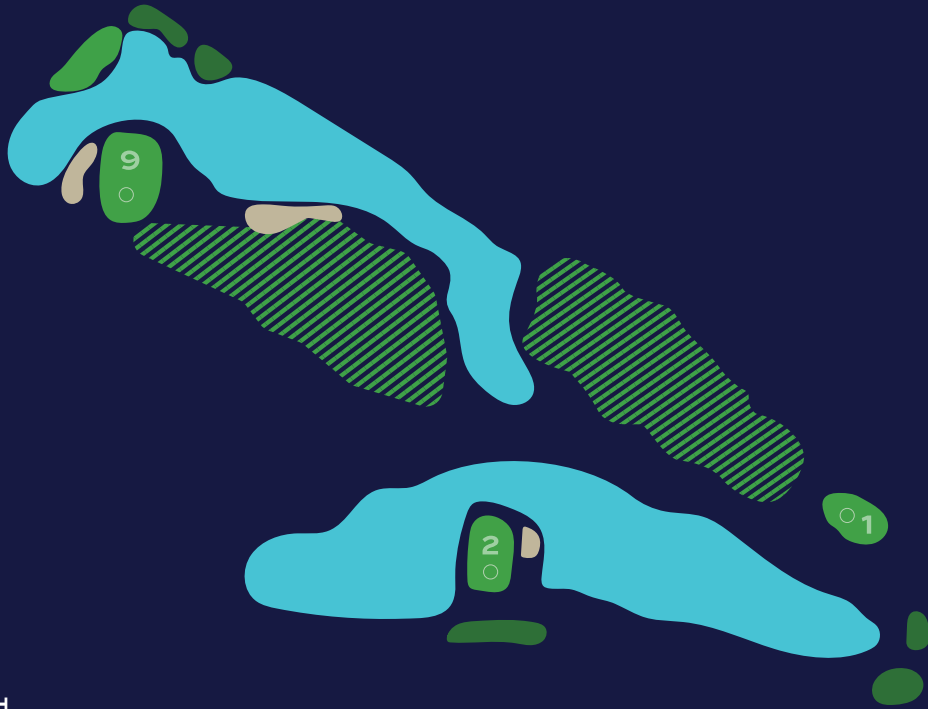
◆ 338

◆ 296

◆ 318

◆ 253





The longest hole on the golf course requires an accurate tee shot to set up a mid to short iron approach. The green is well guarded by bunkers and water so make sure you have the correct yardage to the hole.

◆ 336

◆ 301

◆ 318

◆ 231