



# The Palmer

Three story building with elevator  
Levels One, Two, and Three

RESIDENCE # \_\_\_\_\_

PRICE \$ \_\_\_\_\_



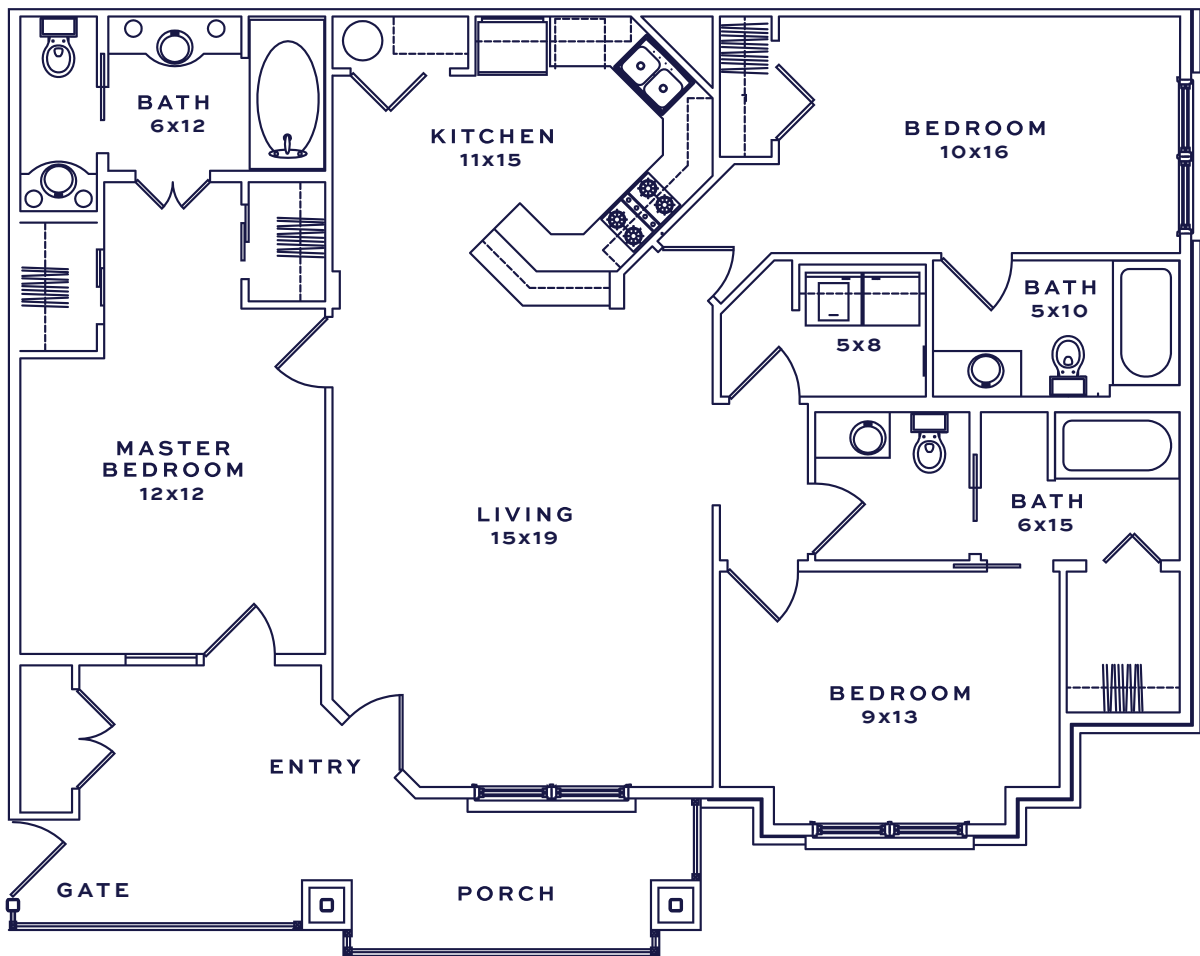
3 BED



3 BATH



1,407 SF



4000 GULF SHORES PARKWAY, GULF SHORES, AL 36542

1 844 ONE CLUB | ONECLUBGULFSHORES.COM



All dimensions, renderings and oor plans are approximate. Pricing subject to change.